










The background of the slide is a detailed architectural drawing in a light gray tone. It features a central perspective view of a multi-story building with a complex facade, including balconies and varied window placements. To the right, there is a large circular architectural element, possibly a dome or a circular courtyard, with radial lines and angular measurements (30°, 20°, 10°) indicating its structure. Various other lines, arcs, and dimensions (like 92.5, 185, 12, 3) are scattered throughout the drawing, giving it a technical and professional appearance.

## Index

-  **Introduction**
-  **Planning**
-  **Contracting - Consulting**
-  **Public Projects**
-  **Residential**
-  **Interior**
-  **Contact Us**

# 35 Years Of Achievements ...



# Introduction

## Who Is KFA

KFA Group is one of the most successful Architectural and Engineering Companies in Damascus-Syria.

It was established in 1982 and has been growing till this day.

KFA is a design practice team of various specializations which include architecture, interior design, furniture design, and lighting.

KFA Group has adapted three of the main architectural principles: Creativity, Simplicity and Flexibility.

Our aim is to generate a distinctive interaction between space, in its various elements, and the person that exists within the space.

Our philosophy is to combine functionality with creativity, and contemporary design with timeless designs, to redefine the individuality of environments through the integration of the cultural context into the design concept.

KFA's services range from conceptual studies to providing architectural detailing, technological advice and consultations with customer specifications.

Ever since its establishment, KFA Group was able to offer comprehensive services such as architectural design and planning, interior design, structural design and onsite supervision.

Designs are tailored to suit individual client requirements which result in high-quality, yet cost-effective, workable design solutions for either newly built and/or conversion projects.

We utilize the most recent tools and technology to develop projects, making it possible to successfully accomplish various projects and insure our clients' complete satisfaction.

KFA Group has projects designed and constructed in Syria, KSA, and UAE.

## Our Vision

For our devotion, competence, and proven leadership, KFA will strive to maintain a highly reputable organization in the engineering field.

## Our Mission

KFA follows guiding principles based on:

1. Offering a unique package of creative, sustainable, professional, and efficiently managed projects.
2. Sustaining and developing existing quality management system proficiencies and expertise.







3. Diversifying & innovating in addition to the quality services provided to Clients.
4. Building and maintaining trust and partnership with Stakeholders.
5. Enhancing staff knowledge through training programs for career development.
6. Providing a healthy, safe, friendly and family-like working environment.
7. Promoting teamwork spirit.
8. Introducing latest technologies and trends in all areas of work.

#### **Corporate Agreements:**

KFA has entered into Corporate Agreements with several international engineering firms based in Europe, and the Middle East.

KFA now offers a broad capacity of services that encompass all major areas of architecture, engineering or any particular infrastructure projects.

We also possess the ability to design large scale projects related to power plants, energy and environment and petro mechanical facilities.

Details and nature of these Agreements can be presented to the prospective Clients based on the nature of the Project.

#### **Areas of Expertise:**

1. ARCHITECTURE.
2. INTERIOR DESIGN.
3. CIVIL / STRUCTURAL ENGINEERING.
4. MEP ENGINEERING.
5. SUPERVISION & QUALITY CONTROL.

#### **What We Do:**

1. SITE PLANNING.
2. BANKS.
3. EDUCATIONAL FACILITIES.
4. VILLAS & VILLA COMPLEXES.
5. HOTEL & HOTEL APARTMENTS.
6. MIXED USE BUILDINGS.
7. RELIGIOUS FACILITIES.
8. OFFICE BUILDINGS.
9. RESIDENTIAL BUILDINGS.
10. STANDS.
11. RETAIL PROJECTS.

#### **KFA Founder**

ARCH. KHALED FAHAM

Khaled Al Faham, is one of the prominent engineers in Syria & Iraq, with total experience of more than 49 years.

#### **Featured participations by Arch. Khaled Al Faham before establishing KFA Group:**

##### **1. DENMARK:**

##### **KAMPSAX A/S: 1965-1967**

Architectural studies.

##### **2. IRAQ:**

##### **PAUL SERVICE: 1967-1970**

- Site planning for different projects.
- Member of the planning team for the Master plan of Najaf & Kufa.
- Detailed plans for urban districts in Bagdad & Mosel.

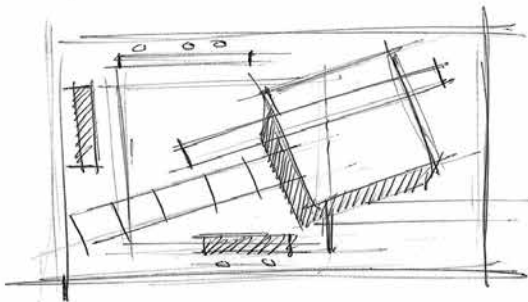
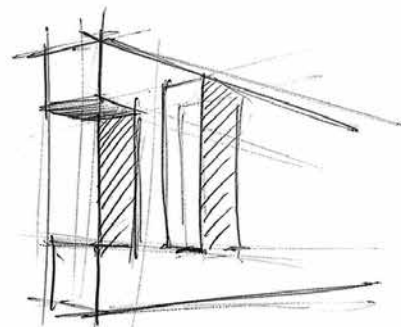
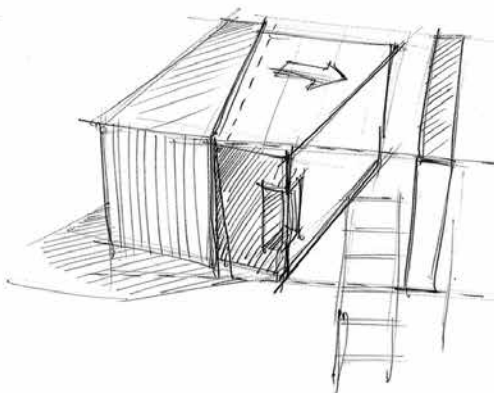
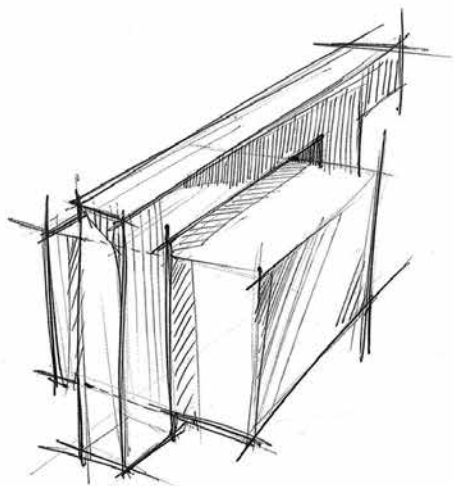
##### **3. SYRIA:**

##### **Municipality Of Damascus: 1970-1979 (Expert contract) Deputy planning manager.**

- **Main planner for more than 20 districts, concerning different land uses such as residential, commercial and industrial in Damascus city.**
- **Part of the main planning team for NEW SHAM residential suburb (5 km) west of Damascus.**
- Worked on the master plan and the related detailed implementation plans.
- **Main planner for AL SAHEB residential suburb (10 km) west of Damascus.**
- Worked on the master plan and the related detailed plans.

##### **Damascus University, Faculty of Architecture 1980-2005:**

- Expert & Lecturer for Architectural Design and Site planning.







## Planning



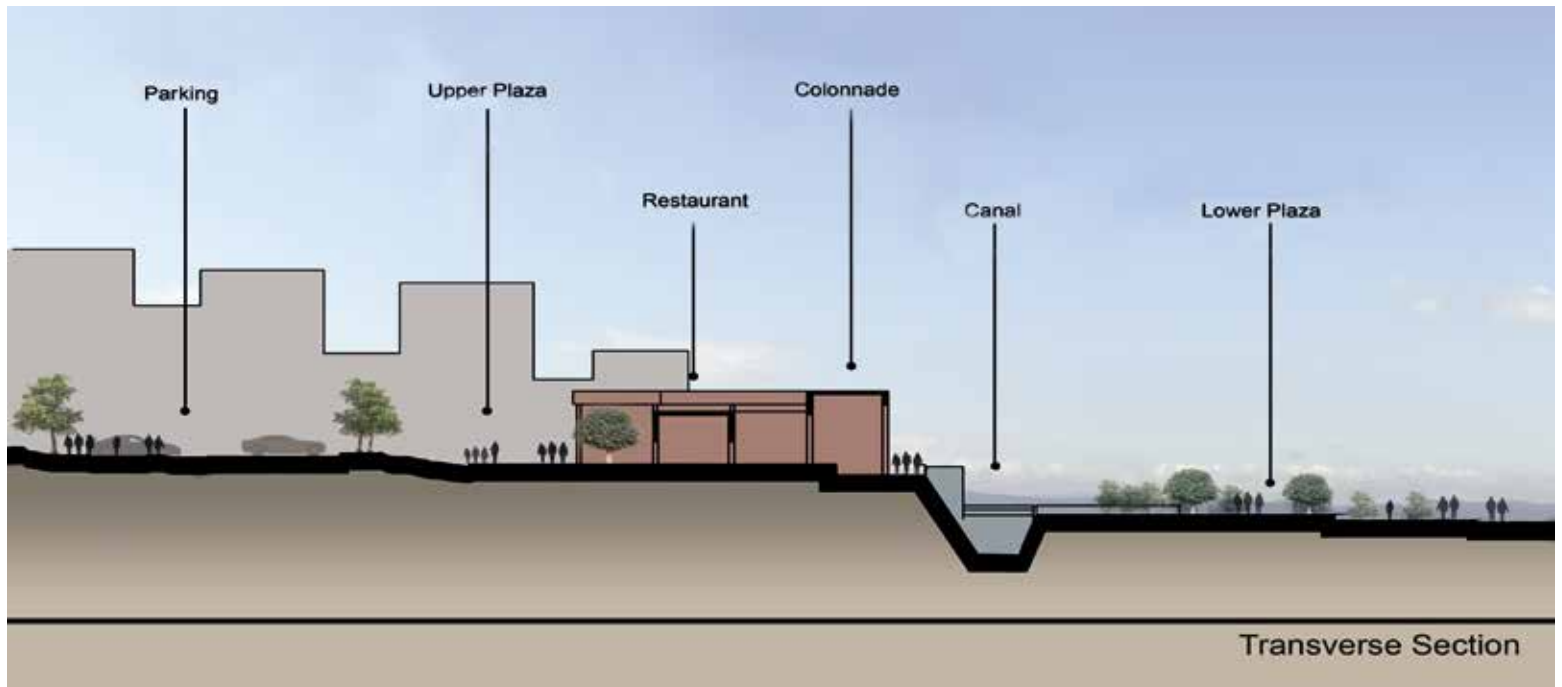
### Tishreen Park

Evaluating report about protecting the environment and the natural heritage in the Western side of Damascus which includes Tishreen Park & Kiwan green areas.

Location : Damascus - Syria

› Tishreen Park - 2003 - Competition





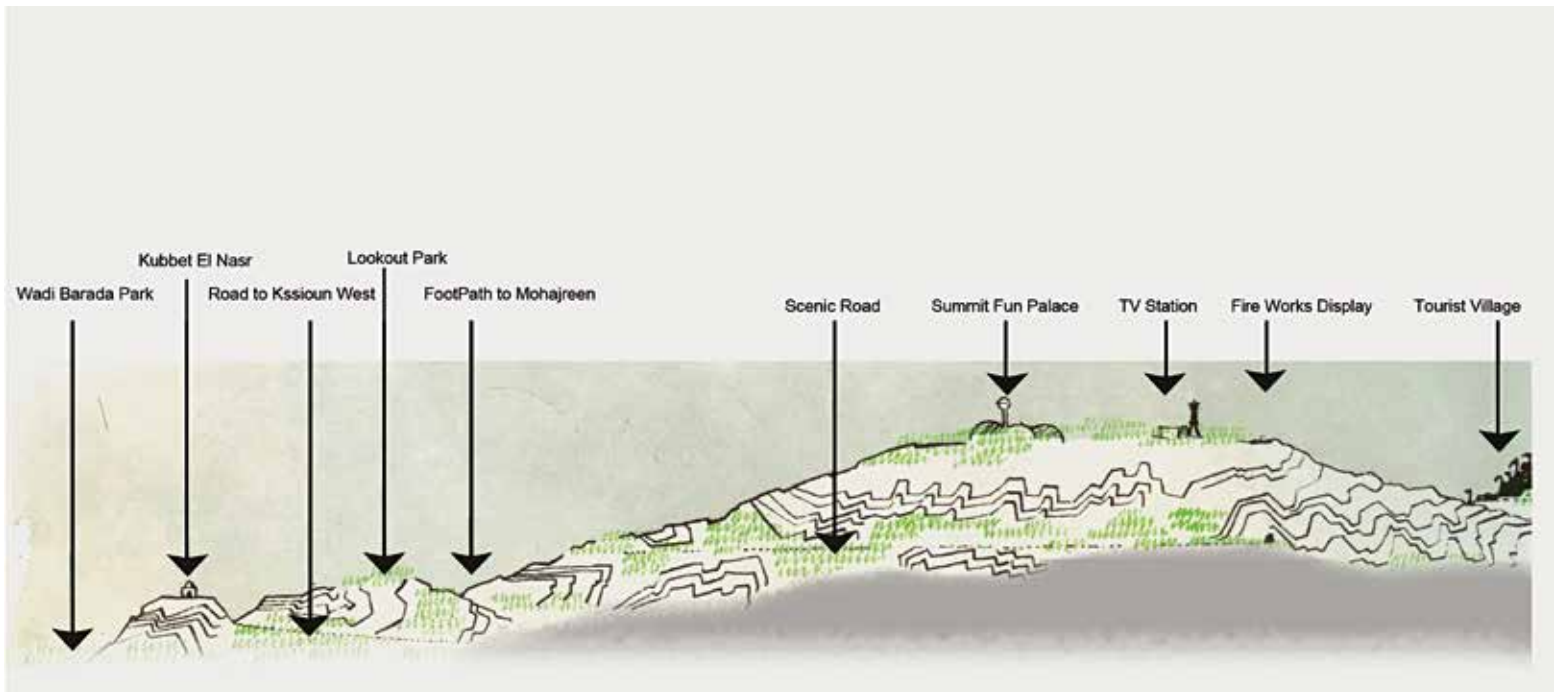


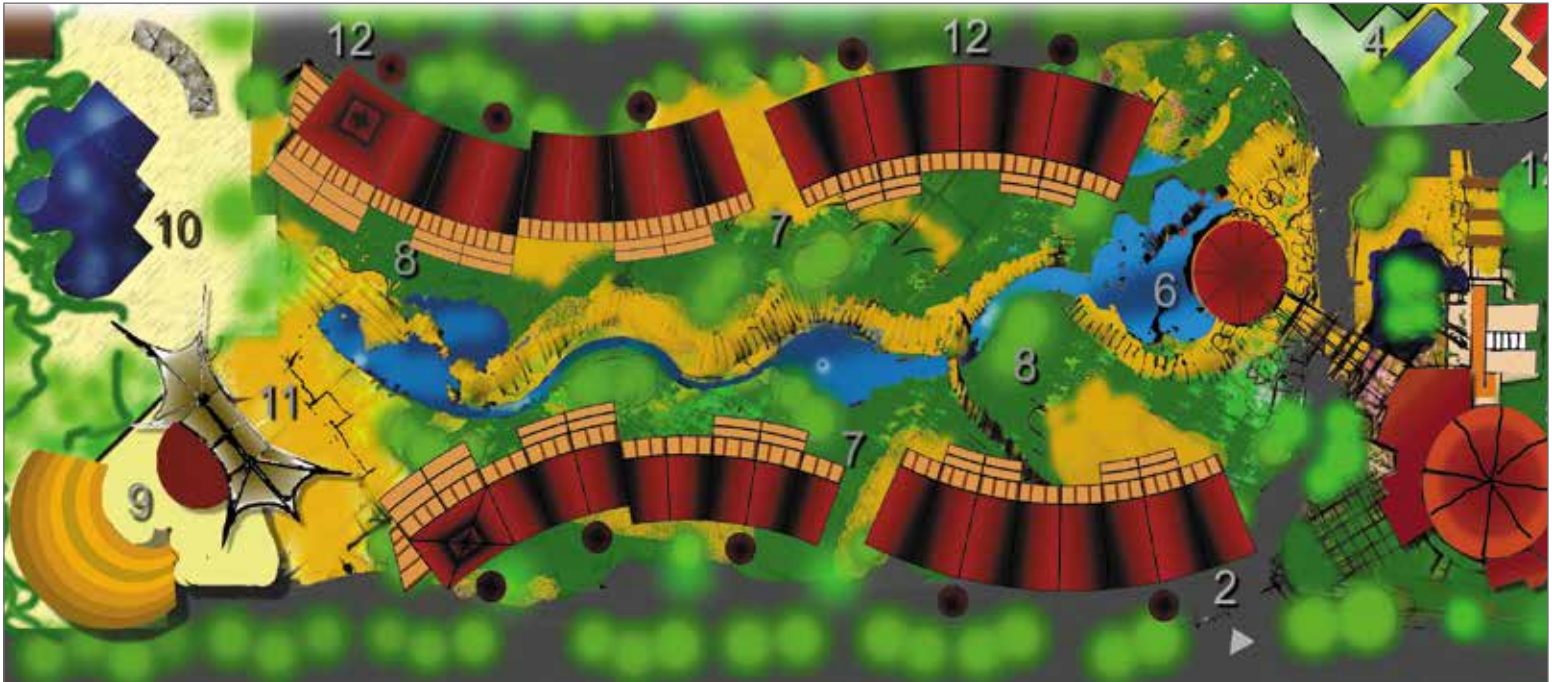
### Qassioun Mountain Planning

Planning and designing a proposal study to develop the peak of Qassioun Mountain (North of Damascus).

Location : Damascus - Syria

› Qassioun Mountain Planning - 2003 - Competition





### Jungle Village

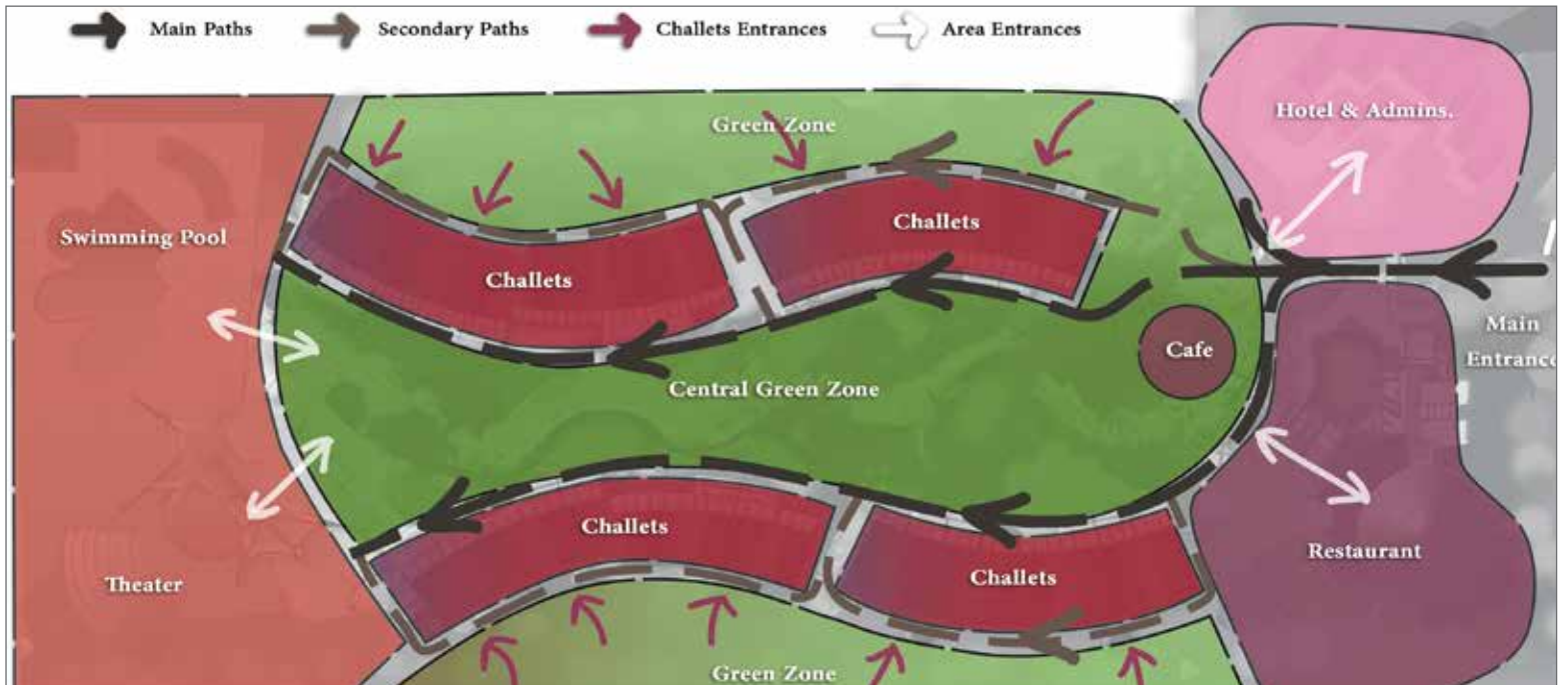
Competition for Five Stars resort – where sea meets mountain providing a beautiful scenery.

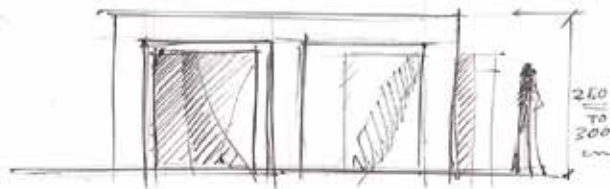
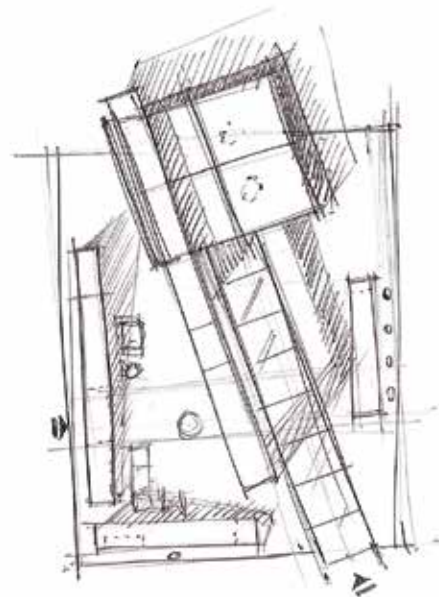
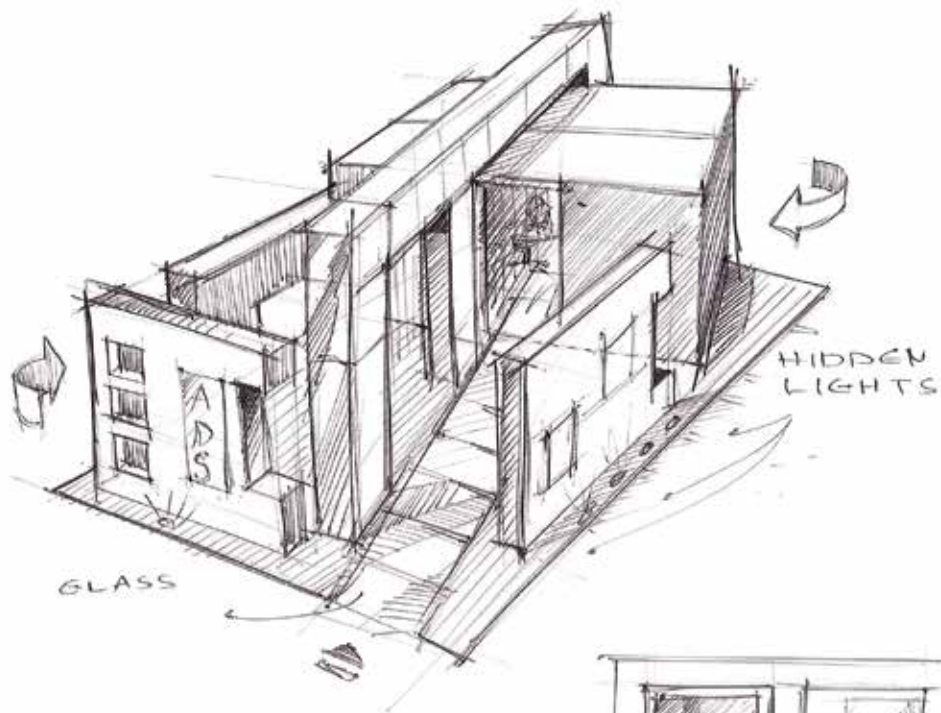
Located near Tartus, the total area is 12 hectare (excluding the sand coast).

Location : Tartus - Syria

› *Jungle Village - Tartus - 2003 - Competition*











# | Contracting - Consulting

## UNHCR RENOVATION WORKS FOR KS3 BUILDING

Location: UNHCR Office, Opposite of al-Andalus Hospital, Kafarsouseh, Damascus, Syria

Plot area: 330 sq. m

Total built-up area: 1340 sq. m

KFA was responsible of performing renovation works for KS3 building of UNHCR. The building consists of a ground floor, three floors, a basement, and a roof. KFA's renovation works included:

- For All Floors: Paint works, sanitary maintenance works, moisture treatment works, and instalment of new gypsum board partitions. The work also included providing electrical boards, air conditions, and doors.

- For Basement: Supplying and installing the Earthing system, casting concrete floors, and preparing shelter rooms.
- For Roof: Insulation works, and solar system maintenance.

KFA was also responsible of:

- Executing: the reception area, 3 precast booths, asphalt ground for the parking area, and an overhead protection roof for the parking.
- Security works: supplying and installing a general alarm system, fire detection system, fire extinguisher, and emergency plans and signs.
- ITC works: network outlets and dual electrical outlets.



## UNHCR RENOVATION WORKS OF KS1 BUILDING RECEPTION

Location: UNHCR Offices KS1 Building, Opposite of Al Andalus Hospital, Kafarsouse, Damascus, Syria

Plot area: 30 sq. m

KFA was responsible of constructing renovation works for the KS1 reception area. The main construction works included supplying and installing:

- Floor concrete works (demolishing, deportation of ruins, casting concrete 200 kg/m3 and insulation works)
- Floor ceramic tiles
- Stairs marble tiles
- Electrical tempered sliding glass door with engine and all needed accessories
- Outdoor Aluminum Window
- Fixed Wooden Partition
- Maintenance works for existing metal doors
- Wooden Reception Desk
- Gypsum Board false walls
- Light Devices
- Dust Carpet Flooring
- Paint Works



## UNHABITAT – SUSTAINABLE SHELTER COMPOUND

Locations:

- Bamarni, Dawodye Village, Duhok City, Iraq
- Baharka, Erbil, Iraq
- Barzinja, Sulaymaniah City, Iraq

The objective of the project was to provide sustainable housing and early recover services for the refugees according to UN Habitat standards and regulations for the people affected by the recent displacement of 2014 in Iraq. KFA was responsible of designing the units and planning the entire site. According to KFA planning, the site contains several building facilities which include:

- Administrative Center
- Social Center
- Schools
- Medical Center
- Storage
- Distribution Center
- Police Center
- Security Points

The site also requires several main services:

› *UNHABITAT – SUSTAINABLE SHELTER COMPOUND - 2014 - Contracting - Consulting*



- Water Network
- Elevated Water Tanks
- Car Roads
- Pedestrian Pathways
- Green Spaces

KFA also designed the housing shelters' to include these two main properties:

- Units are prefabricated
- Each unit must consist of one living room, one bedroom, a bathroom, and a kitchen corner.

Number of units for each site:

1. Bamarni:

- Total number of shared units: 3000 unit
- Total number of constructed units in Phase #1: 400 units

2. Baharka:

- Total number of shared units: 1340 unit
- Total number of constructed units in Phase #1: 304 units

3. Barzinja:

- Total number of shared units: 370 unit
- Total number of constructed units in Phase #1: 150 units

## **\* UNHCR CONSTRUCTION WORKS FOR OFFICE PREMISES IN SWEIDA OFFICES**

Location: UNHCR Offices, Sweida, Syria

Plot area: 475 sq. m

KFA was responsible of renovating UNHCR offices in Sweida. The building consists of three floors: Basement, Ground Floor, and First Floor. KFA's renovation works included the following items:

### **Safe Haven:**

1. Dismantling of the existing wall in front of the staircase and opening a new hall
2. Construct masonry wall with plaster and painting
3. Provide and install two metal doors and one wooden door
4. Changing the locks of two metal doors
5. Covering existing doors with iron plates.

### **Roof Insulation:**

1. Dismantling and replacing all broken roof tiles and covering the repaired partition by liquid polymeric material
2. Checking and fixing the existing water solar system and storm water system

### **Guard's and Driver's Rooms:**

1. Provide and install cement boards with metal structures
2. Supply and install two lockable wooden doors
3. Dismantling and removal of existing metal door and supplying and installing a new lockable metal door
4. Construct masonry wall with plaster and painting
5. Install two aluminum windows with all accessories

## **\*\* UNHCR CONSTRUCTION OF METAL FENCE**

Location: UNHCR Offices, Opposite of Al Andalus Hospital, Kafarsouse, Damascus, Syria

Fence Length: 20 m

KFA was responsible of supplying and installing a metal fence surrounding the UNHCR Office Building, the main construction work included supplying and installing:

- Metal Plates treated with epoxy and painted with UNHCR logos.
- Steel Tubes and anti-climb bars for the fence structure.
- Razor barbed wires.

› *\* UNHCR CONSTRUCTION WORKS FOR OFFICE PREMISES IN SWEIDA OFFICES - 2014 - Contracting - Consulting*

› *\*\* UNHCR CONSTRUCTION OF METAL FENCE - 2014 - Contracting - Consulting*



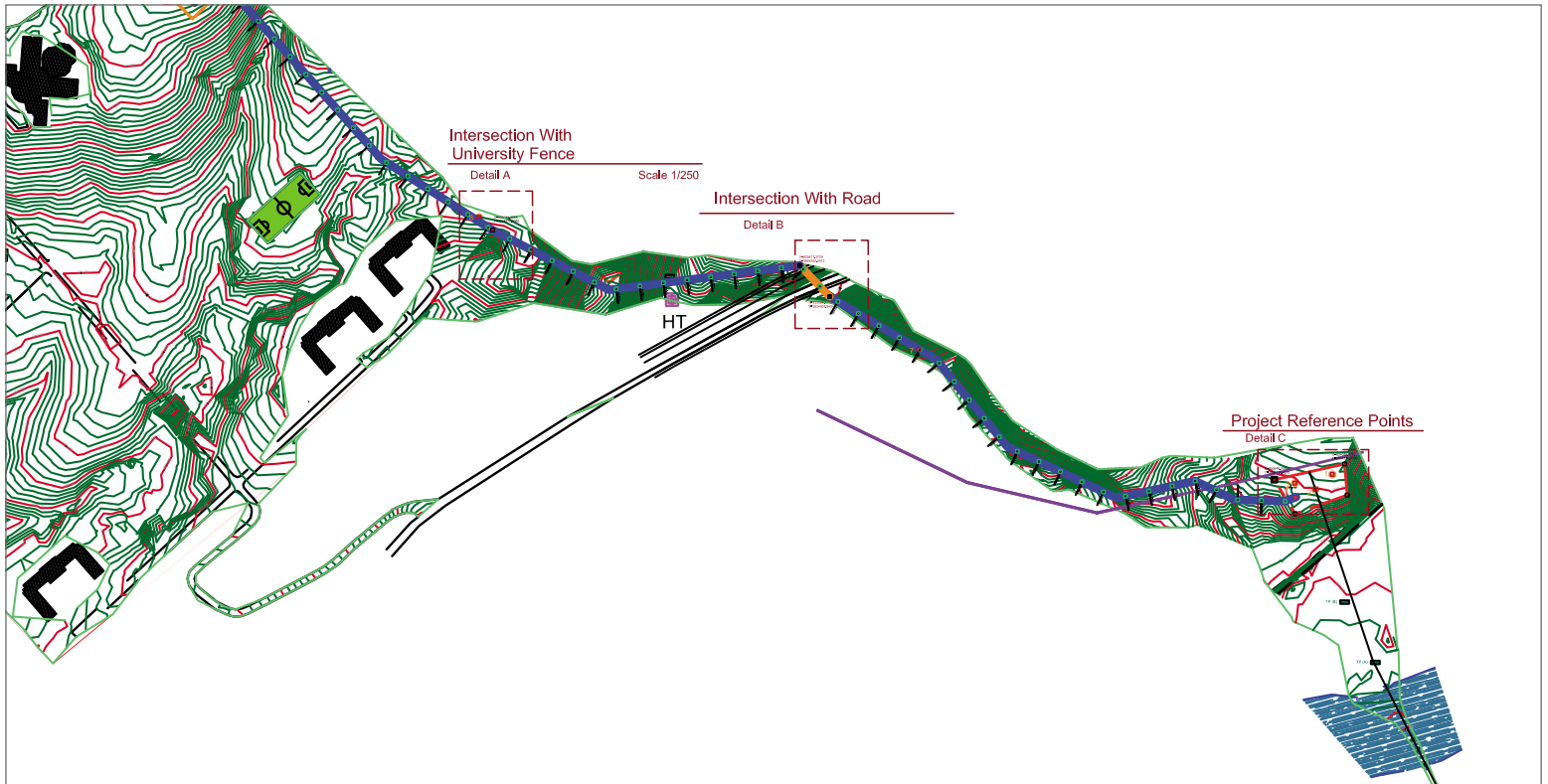


## UNHCR CONSTRUCTION OF EMERGENCY STEEL STAIRCASE

Location: UNHCR Offices, Opposite of Al Andalus Hospital, Kafarsouse, Damascus, Syria

KFA was responsible of supplying and installing an emergency staircase that connects ground floor, first, second, and third floors, and roof. The main construction works included:

- Supply Material and labor to install Fabricated Steel For Escape stair from ground floor to roof floor
- Supply Material and labor to install Fabricated Steel For Fence Surrounding Escape stair from ground floor to roof floor
- Demolition of concrete works
- Supply Material and labor to install Fabricated Steel Doors with Push to Open Button for Escape stair for First & Second & Third Floors & Roof
- Epoxy Paint works
- Supplying and installing emergency lights



### Garmian University:

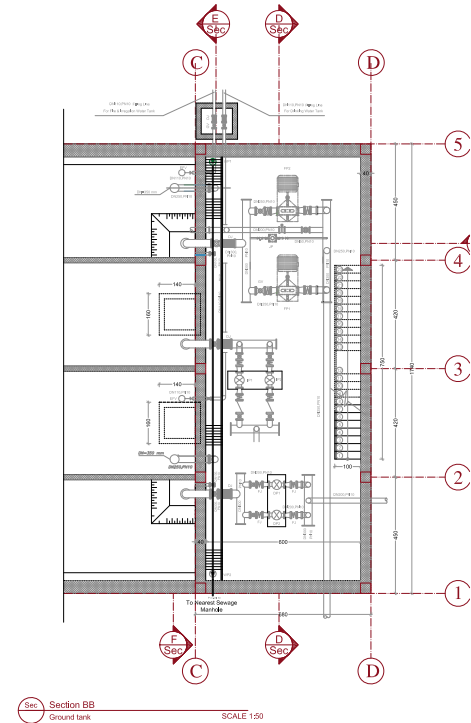
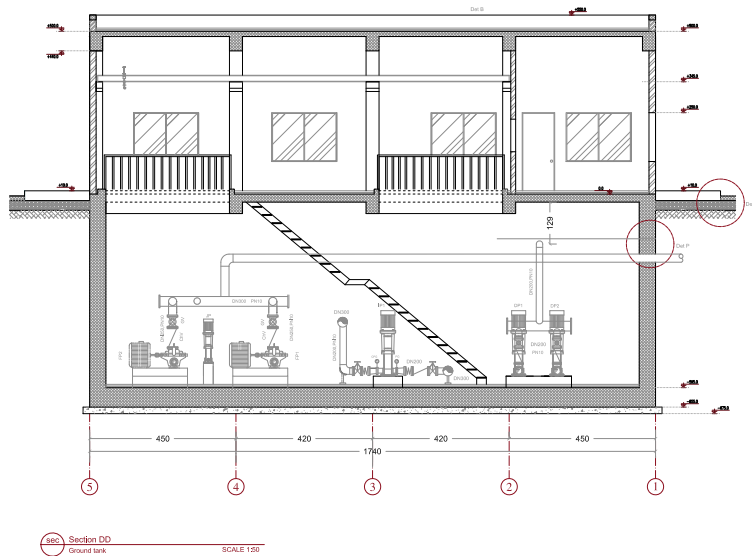
Client: LAND Consulting and Engineering

Location : Garmian - Iraq

The aim of the project is tracking water from « serawan» river to Garmian University.

The project serves a capacity of 9000 people and consists of the following:

1- Intake



2- Water pumping station

3- Water treatment station

4- Water tanks, ground tanks and elevated tanks

5- Water networks

6- Drinking

7- Irrigation

8- Fire fighting

► Water Supply network for Garmian Univ- 2014



## **FODDER FACTORY**

Location: Karkouk Road, Kurdistan Region, Iraq

Plot area: 4650 sq. m

KFA was responsible for designing and constructing the factory which was divided into several functional spaces:

- Large Storage Hall

› *Fodder Factory - 2014 - Contracting - Consulting*



- Production Hall
- Boiler Room
- Compressor Room
- Administrative Area

- Fuel Tanks Room
- Transformer Room
- Generator Room

› *Fodder Factory - 2014 - Contracting - Consulting*



### **IOM Rehabilitation Project:**

Contractor: Natassico

Consultant: KFA

Date: Sep 2013

Location : Lattakia, Hama, Homs, Damascus - Syria

The scope of project was rehabilitation works for 42 shelters including installation of external units (sandwich panels), with the related infrastructure, internal and external works.

The studies and supervision included 4 cities in Syria, divided as the following:

Damascus: 6 shelters

Homs: 26 Shelters

Lattakia : 1 shelter – Lattakia sport city

Hama : 9 shelters

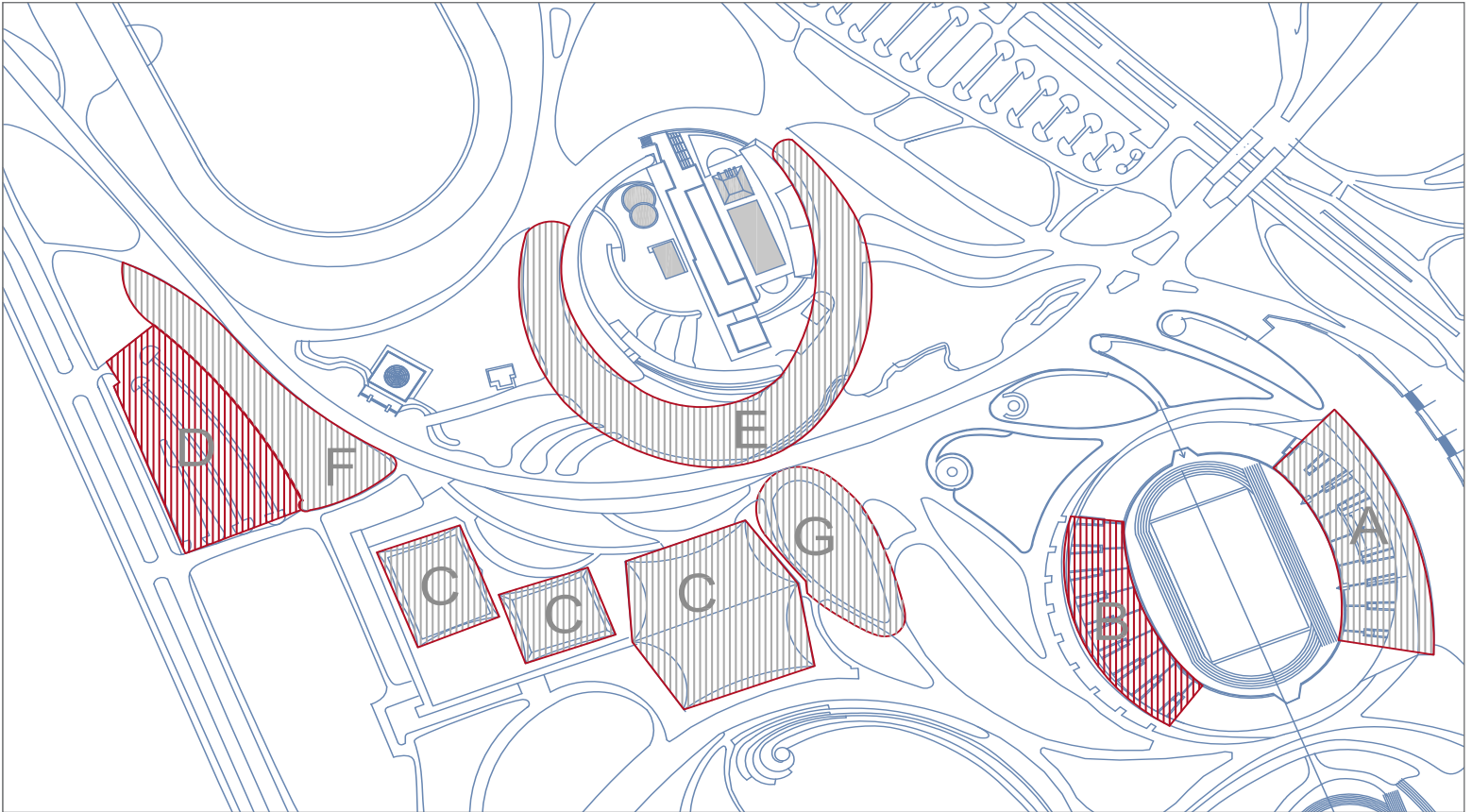
The total number of beneficiaries: IDP was around 10,000 IDPs

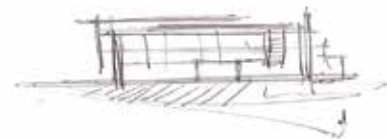
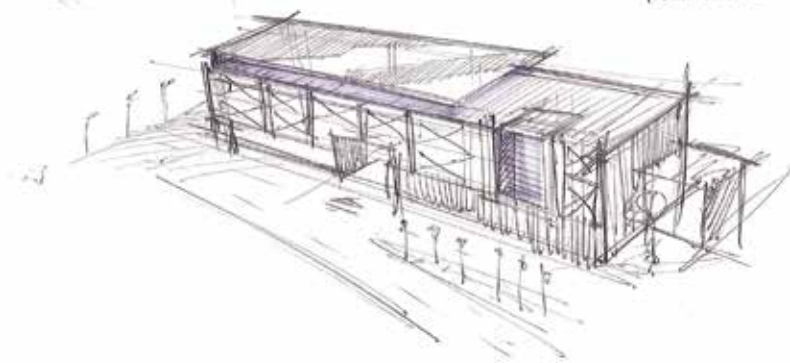
KFA prepared the design study with all related drawings, BOQ, Specs, cost estimates for shelters, including the technical assessment for all above mentioned shelters.

In the construction phase, KFA was responsible for supervising and offering consultations through its professional team consisting of 15 engineers.

The work includes daily and weekly reports, work progress percentage, daily pictures, in addition to technical reports.









- Governmental Buildings
- Multi Storey Parkings
- Hotels

## Public Projects



### People's Hall Competition:

Client: LAND Consulting and Engineering

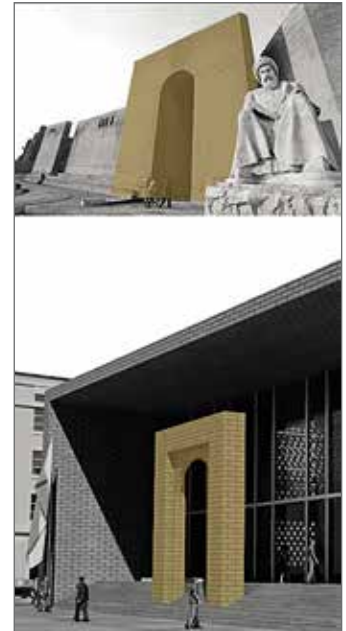
Location: Erbil, Iraq

Plot area: 3,700 sq. m

Concept: the theater is considered a monument that represents Erbil's heritage and conserves it. The goal was achieved by using Erbil's fortress

› *People's Hall- Erbil , Iraq - 2013 - Competition*





as an inspiration for all the architectural forms. Representing the idea that this monument is a gateway of knowledge and culture, a large gate was installed at the entrance with the same feel as Erbil's fortress.

The building consists of 2 floors and 2 underground floors:

- **2 underground floors:**

1. (-4.5 meters) contains storage, backstage areas, electromechanical rooms, and parking that accommodates 54 car parking lots.
2. (- 8 meters) contains parking that accommodates 111 car parking lots.

- **Ground Floor that is divided into two levels:**

1. (+0) contains a reception area, lobby, administration, theater, and backstage.

2. (+4) contains the entrance to the upper level of the theater, a rehearsal hall 100 sq. m, and a café for 90 people.

- **First Floor: 2 rehearsal halls; 100 sq. m and 60 sq. m.**

The building accommodates 165 car parking lots.

The theater accommodates 850 people and consists of two levels:

- Level (+0): accommodates 700 people.
- Level (+4): accommodates 150 people.





### Multi Storey Parking in Baqouba City

Client: LAND Consulting and Engineering

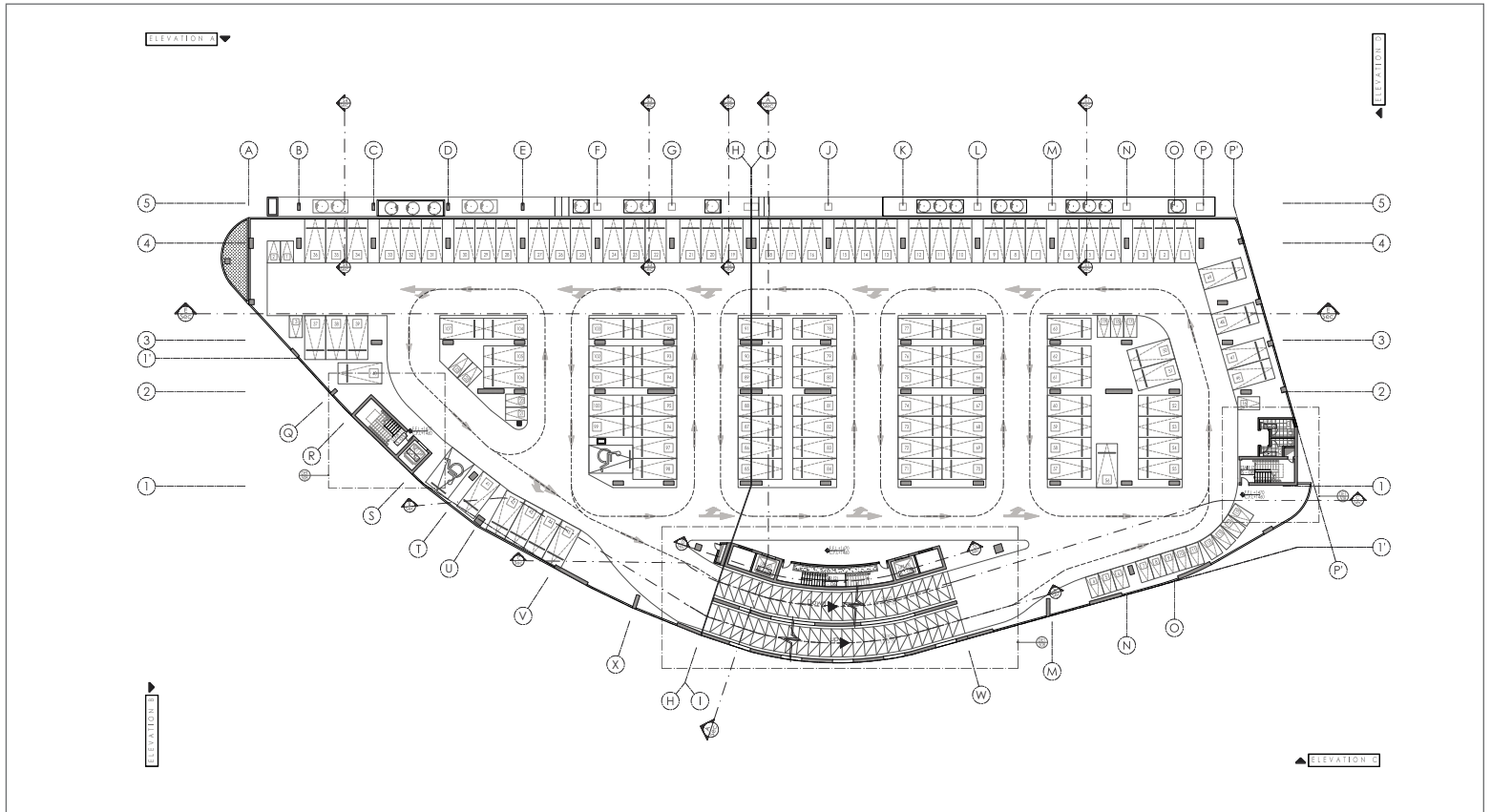
Location: Real estate No. 186, Baqouba City, Iraq

Plot area is 4,475 sq.m

• The project serves two functions: Commercial and Car Parking Functions.

- Building consists of 5 floors:
- Ground floor as a commercial floor
- First floor for offices and clinics
- Second, Third, Fourth floors and the roof function as car parking floors.
- Building accommodates 414 car parking lots.

› *Multi Storey Parking in Baqouba City - 2014 - Tender Study*





### Multi Storey Parking in Holy Karbala City

- Location: Real estate No. 11-12-13, Karbala City, Iraq.
- Plot area is: 4,106 sq.m, (90x56)m.
- The project serves two functions: Commercial and Car Parking Functions.
- Building consists of 6 floors: Ground floor and First floor serve as Commercial floors.
- Second, Third, Fourth, Fifth and Roof floors serve as car parking.
- Building accommodates 506 car parking lots.

## Karbala Concept:

The Architectural vision behind the Karbala project was based on showcasing the religious importance of Karbala and its timeless symbolism.

It is the city where the famous battle of Taff took place.

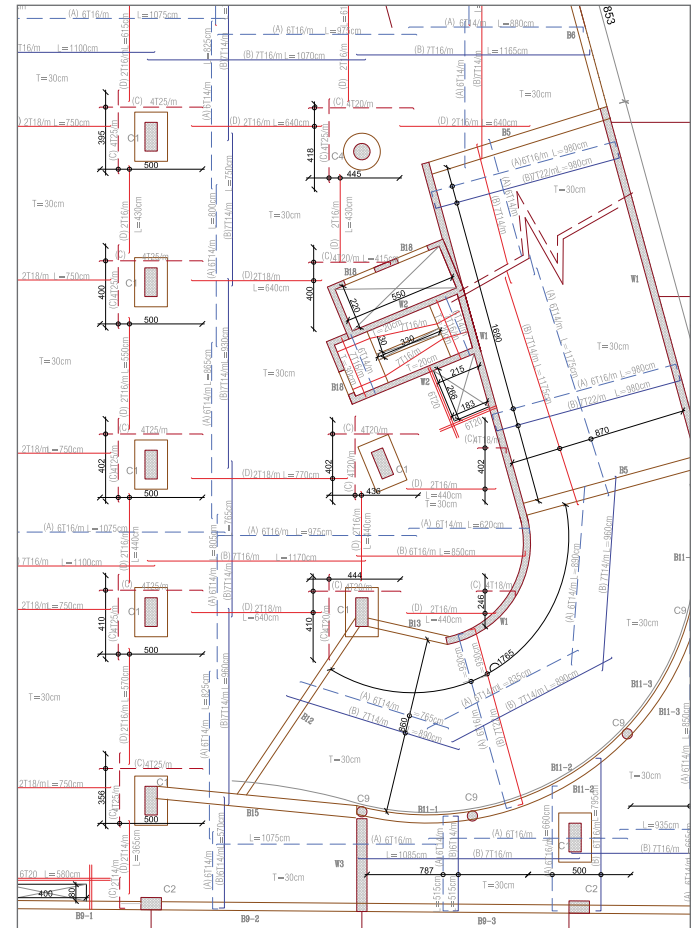
The battle for justice and righteousness was led by Imam Hussein (PBUH). His march is linked to a ship with white sails carrying peace and wisdom. The shapes that reference the ship's sails are white and are lit at night with colors representing the battle as it was underway. In Ashouraa the sails become black to signify the mourning still felt.

Surrounding the building are fountains, which are of the same number as the number of sons of Hashem who were martyred in the battle.

Water was a necessary element to be added to this project as it was used as a weapon in Taff.

The sails were protected from the elements by fortified glass thus keeping them in a clean and spotless condition and to give the building a modern feel as well.

The Commercial floors were separated from the Parking floors with wood in accordance with the overall ship theme.







### Multi Storey Parking in Ammarah City

- Location: Real estate No. 39, Ammarah City, Iraq.
- Plot area: 3,100 sq.m.
- The project serves two functions: Commercial and Car Parking Functions.
- Building consists of 6 floors: Ground floor serves as Commercial floor Second, Third, Fourth, Fifth and Roof floors serve as parking floors.
- Building accommodates 522 car parking lots.





### Multi Storey Parking in Ramadi City

- Location: Real estate No. 21/71, Ramadi City, Iraq.
- Plot area: 6,400 sq.m, (80x80)m.
- Project's land area is 6,400 sq.m
- The project serves two functions: Commercial and Car Parking Functions.
- Building consists of 5 floors: Ground floor serves as Commercial floor  
Second, Third, Fourth and Roof floors serve as parking floors.
- Building accommodates 765 car parking lots.



### Multi Storey Parking in Holy city of Najaf

- Location: Real estate No. 1770, next to the Southern fence of Bab Al-Salam cemetery, Holy City of Najaf, Iraq.
- Plot area: 5,143 sq.m.
- The project serves two functions: Commercial and Car Parking Functions.
- Ground floor serves as Commercial floor
- Second, Third, Fourth, and Roof floors serve as parking floors.
- Building accommodates 556 car parking lots.

› *Multi Storey Parking in Holy city of Najaf - 2013 - Tender Study*



### Aya Hotel - Iraq, Erbil

Client: Private

Location: 100 meter street in Erbil City, Iraq.

KFA was responsible of designing and preparing the detail drawings for the hotel. The hotel consists of:

- Ground Floor serves as a lobby that contains a reception area and cafe.

- The First Floor contains a luxurious restaurant
- The Typical Floor (which extends from the Second till the Sixth Floor) contains 5 rooms and one suite.
- The Rooftop contains the swimming pool, an outdoor terrace, and a gym.

› *Aya Hotel - Iraq, Erbil - 2013-2014 - Design & Consulting*





## **Orient Hotel Competition**

Location: Damascus, Syria.

Plot area: 2,370 sq. m

› *Orient Hotel Competition - Damascus - 2011 - Competition*

The building accommodates 120 car parking lots, and contains 154 hotel rooms. It consists of 12 floors and 4 underground floors:



- **4 Underground Floors:**

- 3 Parking Floors.
- One service floor (laundry and kitchen).

- **Ground floor:** contains an elegant reception, luxurious lobby, spacious café, management offices, a loading deck and loading control room.





• **First Floor:** contains a beautiful large ball room, lecture room, meeting room, and a luxurious protocol room.



• **Second Floor:** contains a spacious and fancy restaurant with its terrace, an indoor swimming pool completed with two sauna rooms, and a gym.



- **Third Floor:** Contains a timeless lobby, business center, and 15 rooms.
- **Floors (3rd – 10th):** contain 133 rooms. Each floor contains 19 rooms.

- **Last Floor (11th floor):** contains 4 Diplomatic suites, and 2 Presidential Suites.







## Residential



### Residential Building No 702 Dummar

Location: Building No. 702, Dummar, Damascus, Syria.

KFA was responsible of designing and preparing the detailed drawings for the building which consists of 15 floors with four apartments in each floor.

- Floors (1st – 15) contain apartments which vary in size between 180 sq. m and 240 sq. m.
- The Ground Floor serves as a spacious entrance for the building.
- The building is also served with underground parking.

› Residential Building No 702 Dummar - 2006 - Tender Study







## Residential Apartment

Location: Malki, Damascus, Syria

Plot area: 230 sq. m

KFA was responsible of the design and construction of the apartment which was divided into several functional spaces:

› *Residential Apartment - Damascus - 2011 - Design & Build*

- Beautiful Living and Dining area with a central Fireplace and a Guest Bathroom
- Spacious Master Bedroom with a Dressing Room and a Master Bathroom
- Two Children's Bedrooms with a Private Bathroom for each room
- Kitchen and Breakfast Area



## **Residential Apartment**

Location: Abu Rummaneh, Damascus, Syria

Plot area: 230 sq. m

KFA was responsible of the design and construction of the apartment which was divided into several functional spaces:

- Luxurious Living and Dining Room with Guest Bathroom
- Master Bedroom with a Dressing Room and a Private Bathroom
- Two Children's Bedrooms with a Private Bathroom for each room
- Stylish Private Living Room
- Kitchen



## **Residential Apartment**

Location: Mazze, Damascus, Syria

Plot area: 160 sq. m

KFA was responsible of the design and construction of the apartment which was divided into several functional spaces:

› *Residential Apartment - Damascus -2009 - Design & Build*



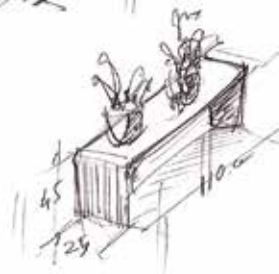
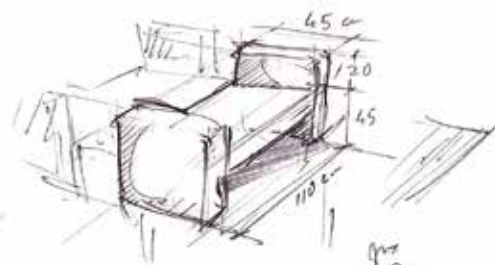
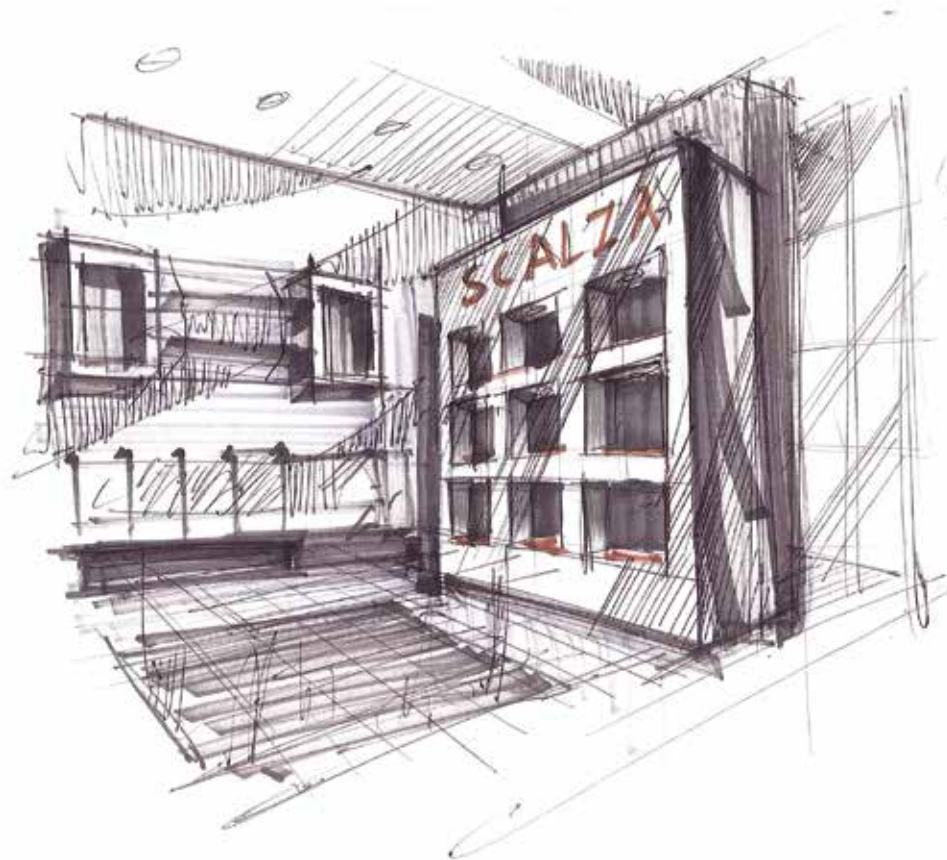


- Classy Living and Dining area with a guest Bathroom
- Cozy Kitchen
- One Master Bedroom

- Two Children's Bedrooms
- One Family Bathroom

› Residential Apartment - Damascus -2009 - Design & Build





- Governmental
- Offices
- Exhibitions
- Stores
- Clinics
- Restaurants

## Interior



### Governorate Office

Location: Erbil, Iraq

KFA was responsible of creating 3D images for all interior spaces in 4 floors:

- Ground Floor: a spacious and elegant lobby and reception, manager's office, a timeless elegant room for the mayor's assistant, rooms for civil

› *Governorate Office - Erbil , Iraq -2013 - Competition*

engineers, an indoor auditorium for approximately 210 people.

- First Floor: Lavish lobby, offices for the Deputy Mayor and managers, and two meeting rooms.
- Second Floor: Administration.
- Third Floor: a warm and elegant cafeteria, a luxurious meeting room.



## Emran Electromechanical Supply LLC

Location: Kafarsouse, Damascus, Syria

Plot area: 120 sq. m

KFA was responsible for the design and construction of the area which

was divided into several functional spaces and contains two levels:

- First Level: Main spacious showroom
- Second Level: Administration and Project Material Display





### **SIIC Syrian Islamic Insurance Company Head Office - Emaar**

Location: 8th Gate Project, Yafour, Syria

Plot area: 230 sq. m

KFA was responsible of designing and supervising the construction of the head office.

The office consists of one floor divided into several functional spaces:





- Elegant Reception
- Secretary
- Manager's Office
- Financier Manager's Office

- Financier Offices
- IT Manager Office
- Two Meeting Rooms

› *Syrian Islamic Insurance Company - Yafour - 2010- Design & Build*



### **SIIC Syrian Islamic Insurance Company Head Office**

Location: Abu Rummaneh Street, Damascus, Syria

Plot area: 410 sq. m

KFA was responsible of designing and supervising the construction of the head office

and two surrounding gardens.

The office consists of one floor divided into several functional spaces:

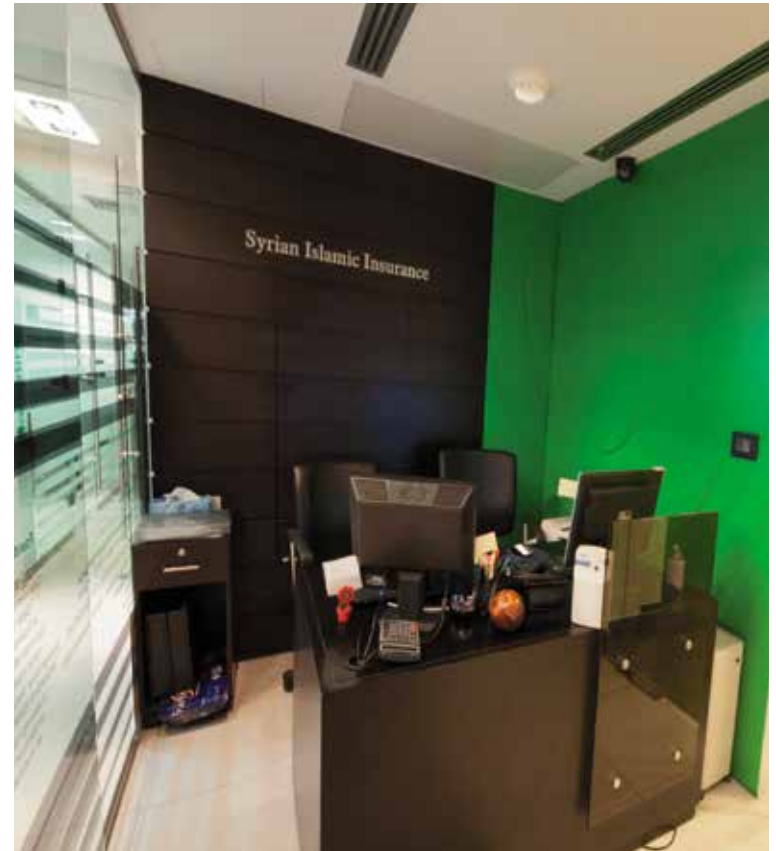
› *SIIC SYRIAN ISLAMIC INSURANCE COMPANY HEAD OFFICE - Damascus - 2008- Design & Build*



- Reception
- Tellers
- Claim Office and Claim Manager
- Supervisor Offices
- IT Offices
- Assistant Manager
- Entrance Garden: serves as the main entrance and contains a beautiful fountain
- Private Garden: serves as employees' resting area

➤ *SIIC SYRIAN ISLAMIC INSURANCE COMPANY HEAD OFFICE - Damascus - 2008- Design & Build*





## **SIIC Syrian Islamic Insurance Company Head Office Extension**

Location: Abu Rummaneh Street, Damascus, Syria

Plot area: 220 sq. m

KFA was responsible of designing and supervising the construction of the head office

extension and one surrounding garden.

The building consists of one floor divided into several functional spaces:

› *SIIC SYRIAN ISLAMIC INSURANCE COMPANY HEAD OFFICE EXTENSION - Damascus - 2008- Design & Build*



- General Manager's Office
- Secretary and entrance lobby
- Marketing
- Financier

- The garden surrounds the fourth side of the building and contains a delicate waterfall and a surrounding deck.





## Europcar Company Office

Location: Baramkeh, Damascus, Syria

Plot area: 72 sq. m

KFA was responsible of the design and construction of the office and its beautiful back garden. The office was divided into several functional

spaces:

- Main Reception Desks for welcoming and assisting the clients
- Private Office
- Private office with entrance to back garden

› *Europcar Company Office- Damascus - 2008 - Design & Build*



## **KFA Consultants for Design and Build Head Office**

Location: Damascus, Syria.

Plot area: 200 sq. m

KFA was responsible of the design and construction process of its head office and surrounding garden.

Concept: create an energetic, warm, inspiring office that emphasizes efficiency. Our Philosophy was simplicity.

The office consists of one floor divided into several functional spaces:

- Welcoming entrance with perfect vision of the firm's logo.

- Spacious and timeless area for designers to work in which emphasizes the importance of teamwork.

- Elegant office for KFA General Manager overlooking the designers' space completed with a meeting area.

- Archive Room

- Kitchen and WC

The garden serves as a warm entrance designed and constructed with perfect details and care. It was designed to be visible to all those inside the office.



## Syriatel Exhibition

Location: Buildex, Fairground, Damascus, Syria

Plot area: 740 sq. m

Concept: Elegant and organic lines inspired by Syriatel's logo as guidelines

› Syriatel Exhibition - Damascus -2010 - Design & Build

in dividing the space and inspiration for unique interior furnishing pieces. KFA was responsible of the design and construction exhibition which consists of one floor divided into several functional spaces:

- Stylish Information Desk located in front of the entrance and at the



center of the space for easy access

- Energetic Entertainment area
- Telecommunication Suppliers area
- Spacious Lab

- Syriatel Point of Sale near the entrance
- Elegant Lounge
- Bar
- Secluded and polished VIP area

› *Syriatel Exhibition - Damascus - 2010 - Design & Build*





### **Vitra Company Competition**

Location: Buildex, Fairground, Damascus, Syria

Plot area: 15 sq. m

A competition between 13 architects and interior designers.

› *Vitra company Competition- Damascus - 2008 - Design & Build*

Concept: Modern and simple design to showcase the flexibility of the used mosaic material embodying the concept of the competition which its slogan was "Bathroom as a Living Space".

KFA designed and constructed the Bathroom with careful detailing.





## **Total Company (DZPC) Deir AlZour Petroleum Company Exhibition**

Location: Oil and Energy Expo, Fairground, Damascus, Syria

Plot area: 300 sq. m

› *Total Company Exhibitions- Damascus - 2008 - Design & Build*

KFA was responsible for the design and construction of the space which included the following:

- Reception
- Lounge



### **Vitra Company Exhibition**

Location: Buildex, Fairground, Damascus, Syria

Plot area: 150 sq. m

KFA was responsible for the design and construction of the space which

included the following:

- Reception
- Products Show Room

› *Vitra company Exhibition- Damascus - 2007 - Design & Build*



## AWS Company

Location: IT Fair, Fairground, Damascus, Syria

Plot area: 200 sq. m

KFA was responsible for the design and construction of the space which

included the following:

- Seminar Room
- Surrounding Display Area
- Private VIP Lounge

› AWS Company - Damascus -2006 - Design & Build





### **Global COM Exhibition**

Location: IT Fair, Fairground, Damascus, Syria

Plot area: 18 sq. m.

KFA was responsible for the design and construction of the removable

space which included the following:

- Lounge
- Display Area

› *Global COM Exhibition - Damascus - 2006 - Design & Build*





## **Inana Exhibitions**

Location: IT Fair, Fairground, Damascus, Syria

Plot area: 300 sq. m

KFA was responsible for the design and construction of the space which

included the following:

- Open Seating Lounge
- Service Area
- VIP Lounge

› *Inana Exhibitions -2005 - Design & Build*



### **Katak Company Exhibition Stand**

Location: Job Fair and Food Expo, Fairground, Damascus, Syria

Plot area: 100 sq. m

KFA was responsible for the design and construction of the removable space which included the following:

- Lounge
- Display Area



## JOOP!

Location: Abu Rummaneh, Damascus, Syria

Store Plot area: 180 sq. m

Total Complex area: 400 sq.m

KFA was responsible of the design and construction of three boutiques in one floor, JOOP!, Vaan Lack, and Smalto. The space was sufficiently

divided to accommodate the three stores. The complex also has a beautifully designed entrance garden.

This boutique was divided into several functional spaces:

- Large Showcase area
- Sleek Cashier
- Four strategically placed Dressing Rooms
- Storage

› *Joop!- Damascus - 2011 - Design & Build*





### **Van Laack Boutique**

Location: Abu Rummaneh, Damascus, Syria

Store Plot area: 90 sq. m

Total Complex area: 400 sq.m

KFA was responsible of the design and construction of three boutiques in one floor, JOOP!, Van Lack, and Smalto. The space was sufficiently divided to accommodate the three stores. The complex also has a

beautifully designed entrance garden.

This boutique was divided into several functional spaces:

- Showroom
- Cash Register
- Two changing rooms
- Storage

› *Van Laack Boutique - Damascus - 2011 - Design & Build*





### **Bruno Magli Boutique**

Location: Al Jahez, Damascus, Syria

Plot area: 50 sq. m

The concept design drawings were sent to KFA from Bruno Magli's design department in their headquarters in Italy. KFA was responsible of the construction of the boutique which was divided into three functional

spaces:

- Perfectly detailed showcase area which included elegant shelves, two central seats, a central showcase, and a cashier counter
- Storage
- WC



## **Elegance Boutique**

Location: Al Jahez, Damascus, Syria

Plot area: 94 sq. m

KFA was responsible of the design and construction of the boutique and its beautiful entrance garden. The boutique was divided into several functional spaces:

- Stylish showcase area
- Private Office
- Fitting Room
- Storage
- WC

› *Elegance Boutique - Damascus - 2009 - Design & Build*



## Klin Kids Store

Location: Sham City Center, Kafarsouse, Damascus, Syria

Plot area: 30 sq. m

KFA was responsible for the design and construction of the kids' store. The design was meant to be fun and energetic for kids with unique

shelving.

Spaces included:

- Showcase area with reception
- Storage





## Runway Store

Location: Abu Rummaneh, Damascus, Syria

Plot Area: 250 sq.m

KFA was responsible for designing and constructing the store in a very busy and lively street. Therefore, the design and colors used are very attractive, energetic, and classically elegant. The store has a modern feel by its simplicity, and a classical beauty through its black and white main

colors.

- Elegant Central Cashier Counter
- Surrounding Wall Display Shelves
- Graphic Wall Display
- Fitting Rooms
- Storage
- WC

› Runway Store - Damascus - 2007 - Design & Build





### Scalza Store

Location: Sham City Center, Kafarsouse, Damascus, Syria

Plot area: 45 sq. m

KFA was responsible for designing and constructing the elegant store with unique wall displays and a comfortable central seating. The store was designed with rich browns and beautiful soft creams.



## MOMENTO

Location: Sham City Center, Kafarsouse, Damascus, Syria

Plot area: 72 sq. m

KFA was responsible of the design and construction of Momento store with a section for Guess brand. The space was divided into two functional spaces on different levels:

### Front Space: Momento:

- Three Central Displays

› *Momento - Damascus - 2005 - Design & Build*

- Ferre and Monblanc Wall Display
- Handbag Wall Display
- Cahsier Counter

### Back Space: Guess:

- Two Central Displays
- Eyewear Wall Display
- Two Handbag Wall Displays
- Watches Display



## Guess

Location: Al Jahez, Damascus, Syria

Plot area: 55 sq. m

KFA was responsible of the design and construction of the store, the space included the following:

- Central Display

› *Guess - Damascus - 2005 - Design & Build*

- GC Watches Wall Display
- Two Eyewear Wall Displays
- Handbags Display Shelves
- Cashier Counter
- Storage
- Beautiful Exterior Glass Facade



## **Dermatology and Dental Clinic**

Location: Mazze, Damascus, Syria

Plot area: 140 sq. m

KFA was responsible for the design and construction of the clinic.

The clinic contains three functional spaces:

### **Dermatology:**

- Massage Room
- Examining Room





- Surgery Room

- WC

#### **Dental:**

- X-Ray Room

- Surgery Room

- Orthodontist Room

- Examining Room

- WC

#### **Shared Areas:**

- Waiting Area

- Reception

- Kitchen

- WC

## Contact Us

### Damascus Office

Syria, Damascus, Baramkeh

P.O.Box 11340

Tel : +963 11 2125759

Fax: +963 11 2125167

### Iraq Office

Iraq, Erbil, 60 meter. Road, Iskan

Tel: +964 750 8188196

+964 750 4459912

+964 662 221667

### Germany Office

Germany, Berlin - Eyke von repkow

Plz.01-10555

Tel: +491 762 5377084

[info@kfa-design.com](mailto:info@kfa-design.com)

[www.kfa-design.com](http://www.kfa-design.com)